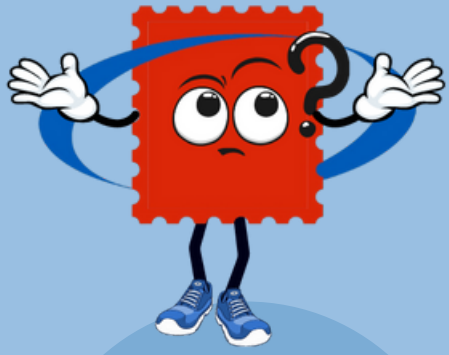
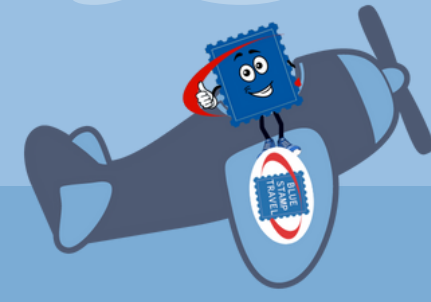


Questions



1

Around which holiday does the Semana Santa celebration revolve?



semana santa

2

What century did the Easter processions and events in Spain date back to?

3

Where did the origin of the Easter processions and events in Spain take place?

4

At the procession events, what do the floats and sculptures symbolise?



5

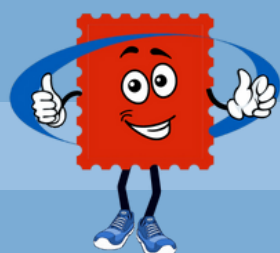
What route starting with 'C' do many of the Easter celebrations take place on?

6

How is Jesus depicted arriving in Jerusalem in the processions on Palm Sunday?

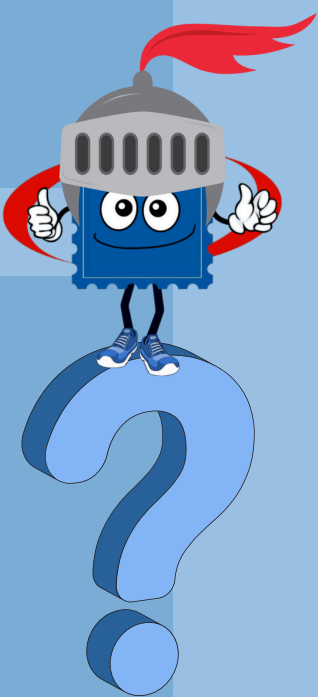
7

What are the two events that are signified on Resurrection Sunday?



Challenge task:

Write a short summary on what Semana Santa is and how it's celebrated in Spain



Questions

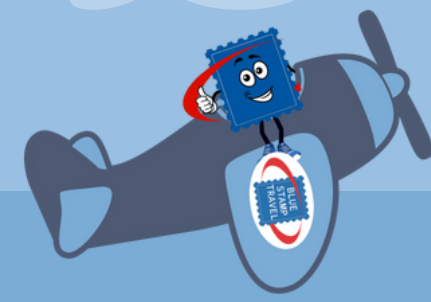
Answers:



1

Around which holiday does the Semana Santa celebration revolve?

Easter.



semana santa

2

What century did the Easter processions and events in Spain date back to?

The 12th Century.

3

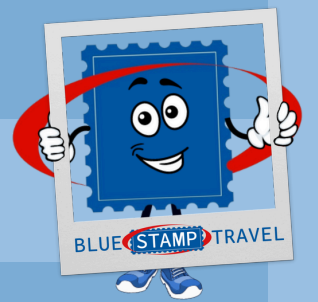
Where did the origin of the Easter processions and events in Spain take place?

Zamora.

4

At the procession events, what do the floats and sculptures symbolise?

The passion of Christ.



5

What route starting with 'C' do many of the Easter celebrations take place on?

The Camino route.

6

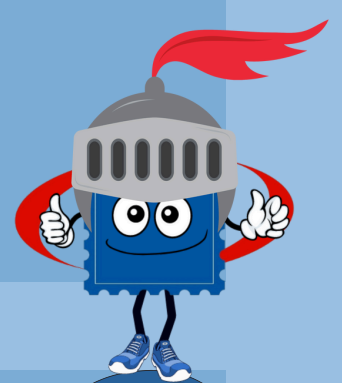
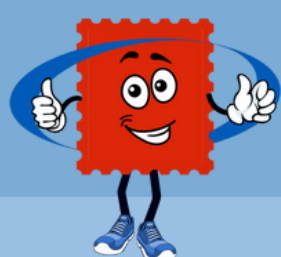
How is Jesus depicted arriving in Jerusalem in the processions on Palm Sunday?

He is depicted on a donkey (and welcomed with palm leaves).

7

What is the event that is signified on Resurrection Sunday?

Jesus's resurrection after his crucifixion.



Keywords include: - Spanish Easter celebration.

- Re-enacting the resurrection of Christ and various episodes of the passion of Christ.
- Processions include floats and sculptures.
- The procession floats and sculptures are carried by members called 'brotherhood'.
- Palm Sunday - processions depict Jesus on a donkey welcomed with palm leaves.
- Holy Thursday - 'Juevas Santo' - Last supper and Church bells are silenced until Easter Sunday.
- Holy Friday - Illustrates Christ's passion and meeting with Virgin Mary and crucifixion.
- Holy Saturday - Easter Eve and day of mourning Jesus's death (quiet, reflection on loss, waiting and hope).
- Resurrection Sunday - Easter Sunday and signifies Jesus's resurrection after his crucifixion.

Challenge task:

What are the two events that are signified on Resurrection Sunday?