

# FRENCH FESTIVITIES QUESTIONS



1

What is the tradition during Epiphany?

2

What does Fête du Citron translate to?

3

What do French people say instead of Easter?

4

When is La Fête du Travail?



5

Is Braderie de Lille the biggest flea market in Europe?

6

Where is Fêtes des Lumières held?



# FRENCH FESTIVITIES QUESTIONS



7

What does La Chandeleur translate to?

- Chandelier      Kitchen
- Candlemas      Chocolate



8

What day of the week is 'Mardi' in Mardi Gras?

- Wednesday      Friday
- Sunday      Tuesday



9

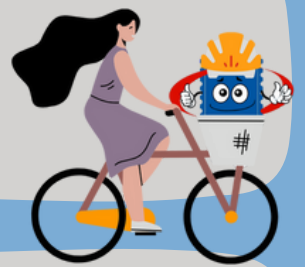
What month does Chorégies d'Orange usually fall in?

- March      July
- September      August

10

How long does Tour de France last?

- 4 months      1 week
- 5 days      3 weeks



11

Fill in the blank:

La Nuit \_\_\_\_\_



12

Name as many traditions to do on Noël:



# FRENCH FESTIVITIES ANSWERS



1

**What is the tradition during Epiphany?**

People get a King's cake that includes a porcelain figure and whoever finds it is king or queen for the day.

2

**What does Fête du Citron translate to?**

Lemon Festival.

3

**What do French people say instead of Easter?**

Pâques.

4

**When is La Fête du Travail?**

1st May.



5

**Is Braderie de Lille the biggest flea market in Europe?**

Yes.

6

**Where is Fêtes des Lumières held?**

Lyon.



# FRENCH FESTIVITIES ANSWERS



7

What does La Chandeleur translate to?

- Chandelier    Kitchen
- Candlemas**    Chocolate



8

What day of the week is 'Mardi' in Mardi Gras?

- Wednesday    Friday
- Sunday    **Tuesday**



9

What month does Chorégies d'Orange usually fall in?

- March    July
- September    **August**

10

How long does Tour de France last?

- 4 months    1 week
- 5 days    **3 weeks**



11

Fill in the blank:

La Nuit Blanche



12

Name as many traditions to do on Noël:

Putting up a Christmas tree, decorating the house, visiting a special church service, have a family meal.

